

Oak Park Mall 11149 West 95 St. Overland Park, KS 66214

Supply Report 5-15-25 Mile Radii

Table Of Contents

Definitions	3
5 Mile Radii Supply Overview	4
5 Mile Radii Map	5
5 Mile Radii Detailed Supply Zip Code Table	6
15 Mile Radii Supply Overview	7
15 Mile Radii Map	8
15 Mile Radii Detailed Supply Zip Code Table	9
25 Mile Radii Supply Overview	12
25 Mile Radii Map	13
25 Mile Radii Detailed Supply Zip Code Table	14
About Longitudes Group	19



Oak Park Mall 11149 West 95 St. Overland Park, KS 66214

Supply Report 5-15-25 Mile Radii

Definitions

Total Facilities: Count of all golf courses located within the selected geography level.

Total Golfers: Count of total population that plays golf with one round a year requirement, within the selected geography level.

Avid Golfers: Count of total populations that plays 25 rounds or more of golf a year, within the selected geography level.

USA Course Density Index: A measure of how the number and density of facilities in the selected geography level serve the local golfer population.

Public Facilities: Count of golf courses open to anyone to play, within the selected geography.

Private Facilities: Count of golf courses only open to members, within the selected geography level.

% Public in Market: Percent of public courses found within the selected geography level.

% Private in Market: Percent of private courses found within the selected geography level.

Avid Golfers per Public 18 Hole Equivalent (HEQ): Count of avid golfers to the total count of public facilities, within the selected geography level. A measure of how the availability of public 18 HEQ, is serving the population of avid golfers and total golfers.
Avid golfers per Public 18 HEQ -- National Average 569.

Avid Golfers per Private 18 Hole Equivalent (HEQ): Count of avid golfers to the total count of private facilities, within the selected geography level. A measure of how the availability of public 18 HEQ, is serving the population of avid golfers and total golfers.
Avid golfers per Private 18 HEQ -- National Average 1,354.

Off-course Retail Doors: Count of Off-course retail stores, within the selected geography level.

Avids per Off-Course Retail Store: Count of avid golfers to the total count of off-course retail stores, within the selected geography level.

Total Square Footage: Total square footage for all Off-course retail stores, within the selected geography level.



Oak Park Mall 11149 West 95 St. Overland Park, KS 66214

Supply Report 5-15-25 Mile Radii

5 Mile Radii

Golf Facilities

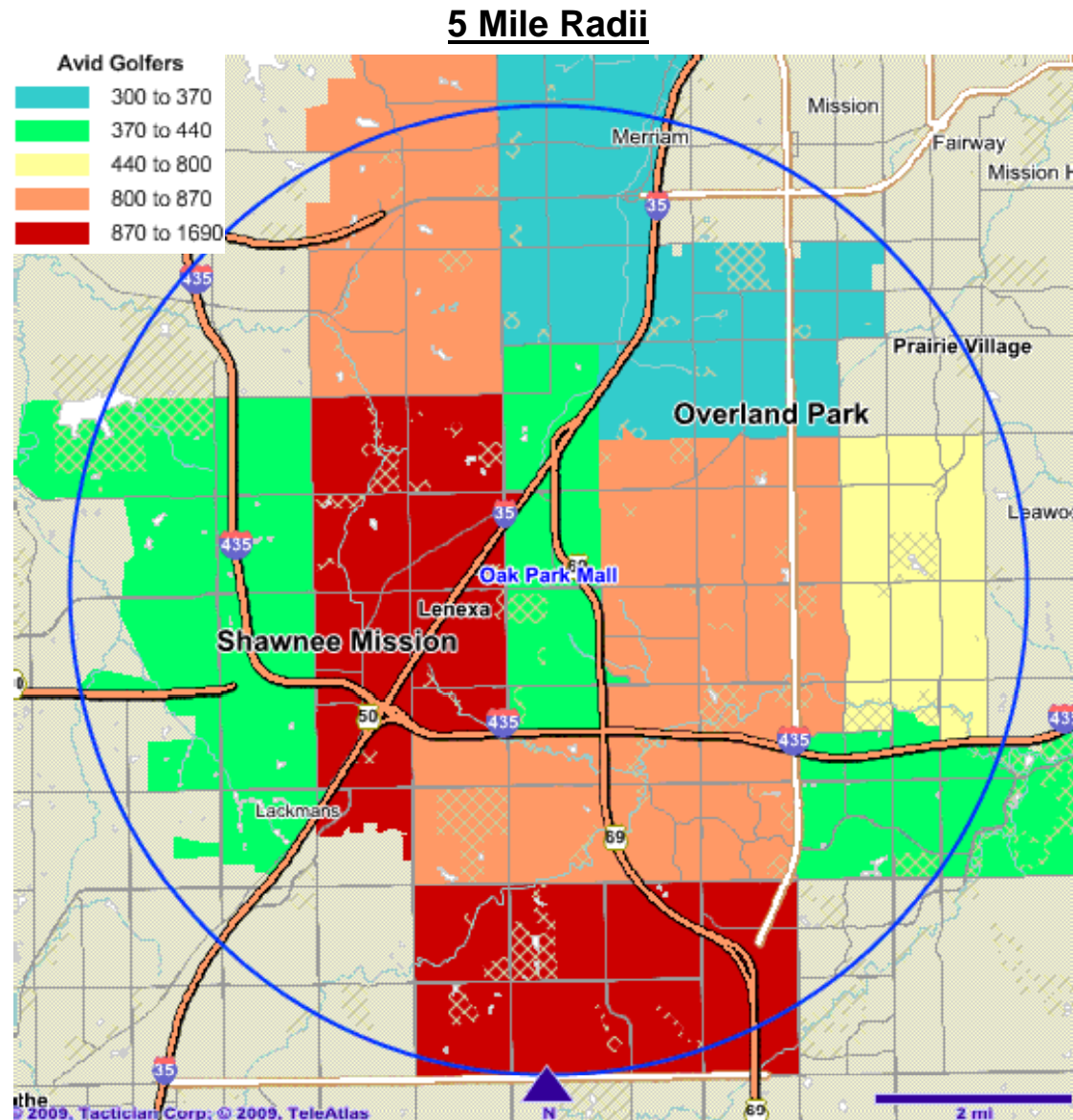
Total Facilities	6
Total Population	208,404
Total Golfers	36,876
Avid Golfers	7,692
USA Course Density Index	49
Public Facilities	2
Private Facilities	4
% Public in Market	33.33%
% Private in Market	66.67%
Avid Golfers per Public 18 HEQ	3,846
Avid Golfers per Private 18 HEQ	1,923

Off-Course Golf Retail:

Off-course Retail Doors (Counts)	1
Avids per Off-course Retail Store	7,692
Total Square Footage	19,100
Sporting Good Counts	2



Oak Park Mall 11149 West 95 St. Overland Park, KS 66214 Supply Report 5-15-25 Mile Radii



Oak Park Mall 11149 West 95 St. Overland Park, KS 66214

Supply Report 5-15-25 Mile Radii

5 Mile Radii

ZIP	Area Name	ST	Total Facilities	Total Golfers	Avid Golfers	Public Facilities	Private Facilities	% Public	% Private	Avid per Public Course 18 HEQ	Avid per Private Course 18 HEQ	Off-Course Retail Doors (Counts)	Avid per Off-Course Retail Store	Sporting Good Store (Counts)
66214	Overland Park	KS	0	1,784	374	0	0	0%	0%	374	374	0	374	0
66215	Lenexa	KS	0	4,691	959	0	0	0%	0%	959	959	0	959	1
66212	Overland Park	KS	1	4,264	849	0	1	0%	100%	849	566	0	849	0
66210	Overland Park	KS	0	4,362	869	0	0	0%	0%	869	869	0	869	0
66204	Overland Park	KS	1	1,779	349	0	1	0%	100%	349	349	0	349	0
66219	Lenexa	KS	1	1,639	375	1	0	100%	0%	375	375	0	375	0
66207	Overland Park	KS	1	3,435	696	0	1	0%	100%	696	696	0	696	0
66213	Overland Park	KS	1	7,868	1,681	1	0	100%	0%	1,121	1,681	1	1,681	0
66216	Shawnee	KS	0	3,844	802	0	0	0%	0%	802	802	0	802	0
66203	Shawnee	KS	0	1,513	302	0	0	0%	0%	302	302	0	302	0
66211	Leawood	KS	1	1,697	436	0	1	0%	100%	436	436	0	436	1
5 Mile Radii Totals			6	36,876	7,692	2	4	33%	67%	3,846	1,923	1	7,692	2



Oak Park Mall 11149 West 95 St. Overland Park, KS 66214

Supply Report 5-15-25 Mile Radii

15 Mile Radii

Golf Facilities

Total Facilities	42
Total Population	997,846
Total Golfers	125,635
Avid Golfers	26,202
USA Course Density Index	75
Public Facilities	25
Private Facilities	17
% Public in Market	59.52%
% Private in Market	40.48%
Avid Golfers per Public 18 HEQ	1,048
Avid Golfers per Private 18 HEQ	1,541

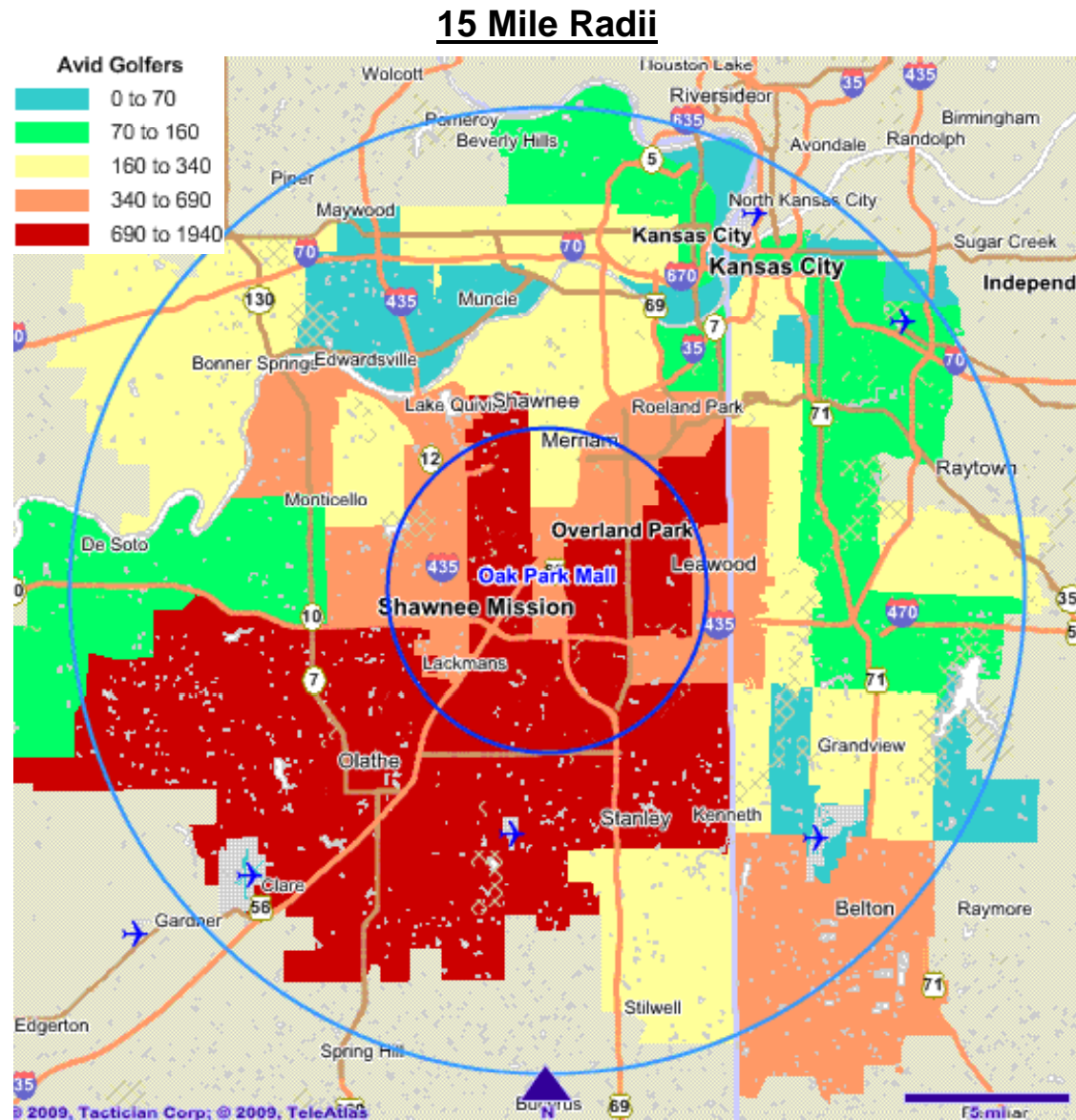
Off-Course Golf Retail:

Off-course Retail Doors (Counts)	5
Avids per Off-course Retail Store	5,240
Total Square Footage	36,400
Sporting Good Counts	7



Oak Park Mall 11149 West 95 St. Overland Park, KS 66214

Supply Report 5-15-25 Mile Radii



Oak Park Mall 11149 West 95 St. Overland Park, KS 66214

Supply Report 5-15-25 Mile Radii

15 Mile Radii

ZIP	Area Name	ST	Total Facilities	Total Golfers	Avid Golfers	Public Facilities	Private Facilities	% Public	% Private	Avid per Public Course 18 HEQ	Avid per Private Course 18 HEQ	Off-Course Retail Doors (Counts)	Avid per Off-Course Retail Store	Sporting Good Store (Counts)
66214	Overland Park	KS	0	1,784	374	0	0	0%	0%	374	374	0	374	0
66215	Lenexa	KS	0	4,691	959	0	0	0%	0%	959	959	0	959	1
66212	Overland Park	KS	1	4,264	849	0	1	0%	100%	849	566	0	849	0
66210	Overland Park	KS	0	4,362	869	0	0	0%	0%	869	869	0	869	0
66204	Overland Park	KS	1	1,779	349	0	1	0%	100%	349	349	0	349	0
66219	Lenexa	KS	1	1,639	375	1	0	100%	0%	375	375	0	375	0
66207	Overland Park	KS	1	3,435	696	0	1	0%	100%	696	696	0	696	0
66213	Overland Park	KS	1	7,868	1,681	1	0	100%	0%	1,121	1,681	1	1,681	0
66216	Shawnee	KS	0	3,844	802	0	0	0%	0%	802	802	0	802	0
66203	Shawnee	KS	0	1,513	302	0	0	0%	0%	302	302	0	302	0
66211	Leawood	KS	1	1,697	436	0	1	0%	100%	436	436	0	436	1
66206	Leawood	KS	0	3,135	687	0	0	0%	0%	687	687	0	687	0
66202	Mission	KS	0	2,124	437	0	0	0%	0%	437	437	0	437	1
66217	Shawnee	KS	2	1,649	341	1	1	50%	50%	341	341	0	341	0
66220	Lenexa	KS	2	1,765	460	2	0	100%	0%	307	460	0	460	0
66209	Leawood	KS	2	6,827	1,548	1	1	50%	50%	1,548	1,548	0	1,548	0
66208	Prairie Village	KS	3	6,050	1,248	0	3	0%	100%	1,248	416	0	1,248	0
64114	Kansas City	MO	0	3,624	660	0	0	0%	0%	660	660	0	660	1
66221	Overland Park	KS	1	3,049	734	1	0	100%	0%	734	734	0	734	1
66205	Mission	KS	0	2,568	540	0	0	0%	0%	540	540	0	540	0
66218	Shawnee	KS	0	905	201	0	0	0%	0%	201	201	0	201	0
66223	Overland Park	KS	1	4,766	995	0	1	0%	100%	995	995	1	995	0
64113	Kansas City	MO	0	3,195	584	0	0	0%	0%	584	584	0	584	0
64131	Kansas City	MO	1	1,874	337	1	0	100%	0%	337	337	0	337	0
66062	Olathe	KS	2	9,425	1,936	1	1	50%	50%	1,936	1,936	2	968	1
66224	Overland Park	KS	1	2,939	726	1	0	100%	0%	726	726	0	726	0



Oak Park Mall 11149 West 95 St. Overland Park, KS 66214

Supply Report 5-15-25 Mile Radii

15 Mile Radii

ZIP	Area Name	ST	Total Facilities	Total Golfers	Avid Golfers	Public Facilities	Private Facilities	% Public	% Private	Avid per Public Course 18 HEQ	Avid per Private Course 18 HEQ	Off-Course Retail Doors (Counts)	Avid per Off-Course Retail Store	Sporting Good Store (Counts)
66106	Kansas City	KS	0	964	206	0	0	0%	0%	206	206	0	206	0
64145	Kansas City	MO	1	1,447	336	0	1	0%	100%	336	336	0	336	0
64112	Kansas City	MO	0	1,774	339	0	0	0%	0%	339	339	0	339	0
66227	Lenexa	KS	1	361	93	1	0	100%	0%	93	93	0	93	0
66160	Kansas City	KS	0	114	12	0	0	0%	0%	12	12	0	12	0
66103	Kansas City	KS	0	503	109	0	0	0%	0%	109	109	1	109	0
66113	Edwardsville	KS	0	29	8	0	0	0%	0%	8	8	0	8	0
64146	Kansas City	MO	0	146	26	0	0	0%	0%	26	26	0	26	0
64110	Kansas City	MO	0	822	164	0	0	0%	0%	164	164	0	164	0
66226	Shawnee	KS	1	1,723	411	1	0	100%	0%	274	411	0	411	0
64132	Kansas City	MO	2	713	139	2	0	100%	0%	70	139	0	139	0
64137	Kansas City	MO	1	605	101	0	1	0%	100%	101	101	0	101	0
64111	Kansas City	MO	0	1,470	275	0	0	0%	0%	275	275	0	275	0
66111	Kansas City	KS	0	359	69	0	0	0%	0%	69	69	0	69	0
66105	Kansas City	KS	0	60	16	0	0	0%	0%	16	16	0	16	0
66102	Kansas City	KS	0	932	190	0	0	0%	0%	190	190	0	190	0
66061	Olathe	KS	2	6,520	1,372	1	1	50%	50%	1,372	1,372	0	1,372	1
64130	Kansas City	MO	0	656	104	0	0	0%	0%	104	104	0	104	0
66112	Kansas City	KS	1	768	162	1	0	100%	0%	162	162	0	162	0
64109	Kansas City	MO	0	325	58	0	0	0%	0%	58	58	0	58	0
64102	Kansas City	MO	0	22	5	0	0	0%	0%	5	5	0	5	0
66085	Stilwell	KS	0	1,396	300	0	0	0%	0%	300	300	0	300	0
64108	Kansas City	MO	0	1,179	208	0	0	0%	0%	208	208	0	208	0
66118	Kansas City	KS	0	1	1	0	0	0%	0%	1	1	0	1	0
64030	Grandview	MO	2	1,359	278	2	0	100%	0%	139	278	0	278	0
64147	Kansas City	MO	0	19	4	0	0	0%	0%	4	4	0	4	0



Oak Park Mall 11149 West 95 St. Overland Park, KS 66214

Supply Report 5-15-25 Mile Radii

15 Mile Radii

ZIP	Area Name	ST	Total Facilities	Total Golfers	Avid Golfers	Public Facilities	Private Facilities	% Public	% Private	Avid per Public Course 18 HEQ	Avid per Private Course 18 HEQ	Off-Course Retail Doors (Counts)	Avid per Off-Course Retail Store	Sporting Good Store (Counts)
64101	Kansas City	MO	0	31	10	0	0	0%	0%	10	10	0	10	0
66101	Kansas City	KS	0	345	77	0	0	0%	0%	77	77	0	77	0
64128	Kansas City	MO	0	427	70	0	0	0%	0%	70	70	0	70	0
64105	Kansas City	MO	0	804	140	0	0	0%	0%	140	140	0	140	0
64134	Kansas City	MO	1	840	157	1	0	100%	0%	105	157	0	157	0
64106	Kansas City	MO	0	364	80	0	0	0%	0%	80	80	0	80	0
64138	Kansas City	MO	2	1,709	339	1	1	50%	50%	339	339	0	339	0
66031	New Century	KS	0	31	6	0	0	0%	0%	6	6	0	6	0
64127	Kansas City	MO	0	607	97	0	0	0%	0%	97	97	0	97	0
64129	Kansas City	MO	0	401	73	0	0	0%	0%	73	73	0	73	0
66012	Bonner Springs	KS	2	893	191	1	1	50%	50%	191	382	0	191	0
66104	Kansas City	KS	0	739	150	0	0	0%	0%	150	150	0	150	0
64149	Kansas City	MO	0	55	14	0	0	0%	0%	14	14	0	14	0
66115	Kansas City	KS	0	9	3	0	0	0%	0%	3	3	0	3	0
64124	Kansas City	MO	0	265	45	0	0	0%	0%	45	45	0	45	0
66018	De Soto	KS	2	517	117	2	0	100%	0%	78	117	0	117	0
64012	Belton	MO	3	2,370	498	2	1	67%	33%	199	498	0	498	0
64126	Kansas City	MO	0	190	23	0	0	0%	0%	23	23	0	23	0
15 Mile Totals			42	125,635	26,202	25	17	60%	40%	1,048	1,541	5	5,240	7



Oak Park Mall 11149 West 95 St. Overland Park, KS 66214

Supply Report 5-15-25 Mile Radii

25 Mile Radii

Golf Facilities

Total Facilities	60
Total Population	1,597,990
Total Golfers	185,337
Avid Golfers	38,310
USA Course Density Index	67
Public Facilities	38
Private Facilities	22
% Public in Market	63.33%
% Private in Market	36.67%
Avid Golfers per Public 18 HEQ	1,008
Avid Golfers per Private 18 HEQ	1,741

Off-Course Golf Retail:

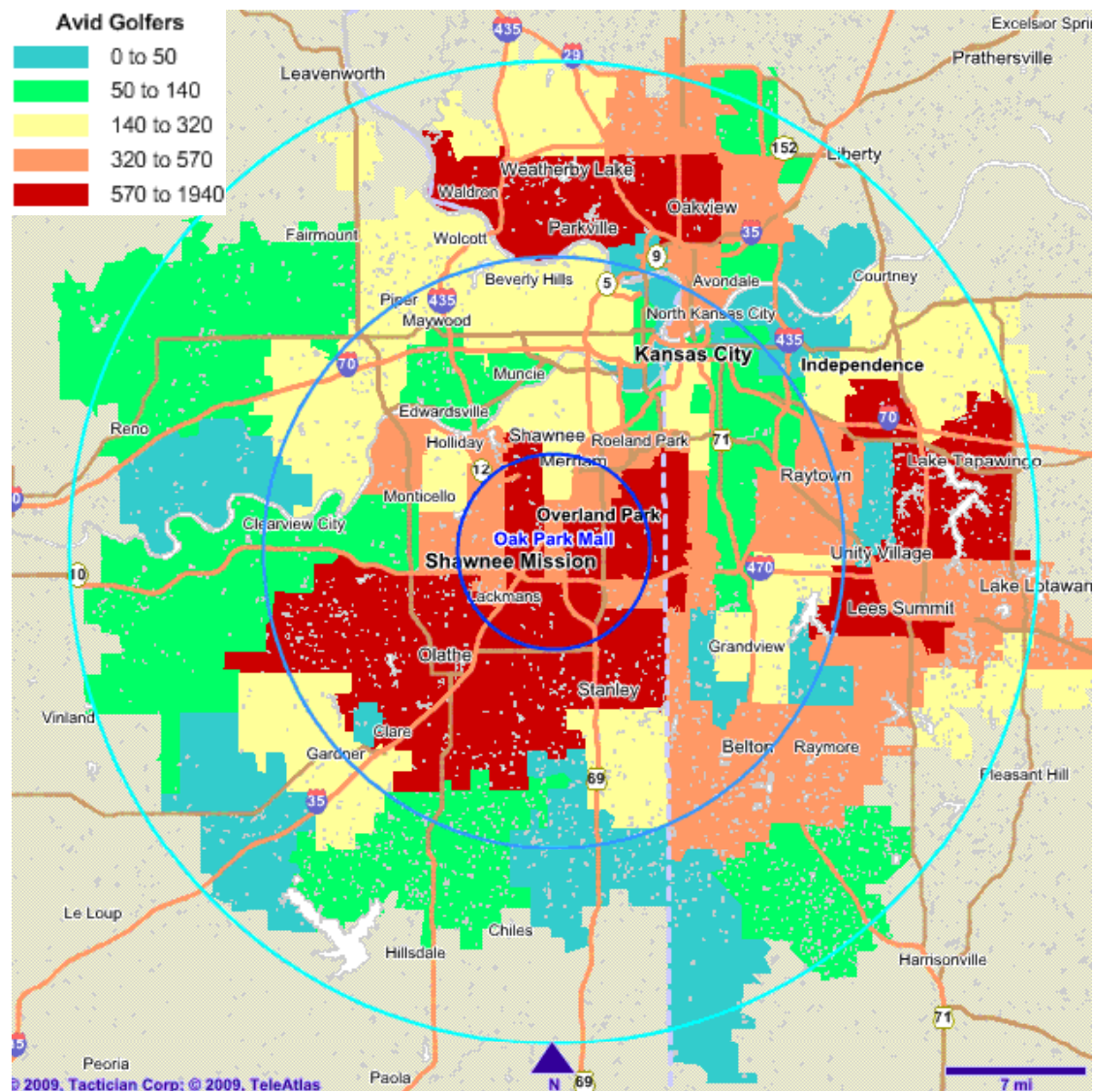
Off-course Retail Doors (Counts)	7
Avids per Off-course Retail Store	5,473
Total Square Footage	40,200
Sporting Good Counts	13



Oak Park Mall 11149 West 95 St. Overland Park, KS 66214

Supply Report 5-15-25 Mile Radii

25 Mile Radii



Oak Park Mall 11149 West 95 St. Overland Park, KS 66214

Supply Report 5-15-25 Mile Radii

25 Mile Radii

ZIP	Area Name	ST	Total Facilities	Total Golfers	Avid Golfers	Public Facilities	Private Facilities	% Public	% Private	Avid per Public Course 18 HEQ	Avid per Private Course 18 HEQ	Off-Course Retail Doors (Counts)	Avid per Off-Course Retail Store	Sporting Good Store (Counts)
66214	Overland Park	KS	0	1,784	374	0	0	0%	0%	374	374	0	374	0
66215	Lenexa	KS	0	4,691	959	0	0	0%	0%	959	959	0	959	1
66212	Overland Park	KS	1	4,264	849	0	1	0%	100%	849	566	0	849	0
66210	Overland Park	KS	0	4,362	869	0	0	0%	0%	869	869	0	869	0
66204	Overland Park	KS	1	1,779	349	0	1	0%	100%	349	349	0	349	0
66219	Lenexa	KS	1	1,639	375	1	0	100%	0%	375	375	0	375	0
66207	Overland Park	KS	1	3,435	696	0	1	0%	100%	696	696	0	696	0
66213	Overland Park	KS	1	7,868	1,681	1	0	100%	0%	1,121	1,681	1	1,681	0
66216	Shawnee	KS	0	3,844	802	0	0	0%	0%	802	802	0	802	0
66203	Shawnee	KS	0	1,513	302	0	0	0%	0%	302	302	0	302	0
66211	Leawood	KS	1	1,697	436	0	1	0%	100%	436	436	0	436	1
66206	Leawood	KS	0	3,135	687	0	0	0%	0%	687	687	0	687	0
66202	Mission	KS	0	2,124	437	0	0	0%	0%	437	437	0	437	1
66217	Shawnee	KS	2	1,649	341	1	1	50%	50%	341	341	0	341	0
66220	Lenexa	KS	2	1,765	460	2	0	100%	0%	307	460	0	460	0
66209	Leawood	KS	2	6,827	1,548	1	1	50%	50%	1,548	1,548	0	1,548	0
66208	Prairie Village	KS	3	6,050	1,248	0	3	0%	100%	1,248	416	0	1,248	0
64114	Kansas City	MO	0	3,624	660	0	0	0%	0%	660	660	0	660	1
66221	Overland Park	KS	1	3,049	734	1	0	100%	0%	734	734	0	734	1
66205	Mission	KS	0	2,568	540	0	0	0%	0%	540	540	0	540	0
66218	Shawnee	KS	0	905	201	0	0	0%	0%	201	201	0	201	0
66223	Overland Park	KS	1	4,766	995	0	1	0%	100%	995	995	1	995	0
64113	Kansas City	MO	0	3,195	584	0	0	0%	0%	584	584	0	584	0
64131	Kansas City	MO	1	1,874	337	1	0	100%	0%	337	337	0	337	0
66062	Olathe	KS	2	9,425	1,936	1	1	50%	50%	1,936	1,936	2	968	1
66224	Overland Park	KS	1	2,939	726	1	0	100%	0%	726	726	0	726	0



Oak Park Mall 11149 West 95 St. Overland Park, KS 66214

Supply Report 5-15-25 Mile Radii

25 Mile Radii

ZIP	Area Name	ST	Total Facilities	Total Golfers	Avid Golfers	Public Facilities	Private Facilities	% Public	% Private	Avid per Public Course 18 HEQ	Avid per Private Course 18 HEQ	Off-Course Retail Doors (Counts)	Avid per Off-Course Retail Store	Sporting Good Store (Counts)
66106	Kansas City	KS	0	964	206	0	0	0%	0%	206	206	0	206	0
64145	Kansas City	MO	1	1,447	336	0	1	0%	100%	336	336	0	336	0
64112	Kansas City	MO	0	1,774	339	0	0	0%	0%	339	339	0	339	0
66227	Lenexa	KS	1	361	93	1	0	100%	0%	93	93	0	93	0
66160	Kansas City	KS	0	114	12	0	0	0%	0%	12	12	0	12	0
66103	Kansas City	KS	0	503	109	0	0	0%	0%	109	109	1	109	0
66113	Edwardsville	KS	0	29	8	0	0	0%	0%	8	8	0	8	0
64146	Kansas City	MO	0	146	26	0	0	0%	0%	26	26	0	26	0
64110	Kansas City	MO	0	822	164	0	0	0%	0%	164	164	0	164	0
66226	Shawnee	KS	1	1,723	411	1	0	100%	0%	274	411	0	411	0
64132	Kansas City	MO	2	713	139	2	0	100%	0%	70	139	0	139	0
64137	Kansas City	MO	1	605	101	0	1	0%	100%	101	101	0	101	0
64111	Kansas City	MO	0	1,470	275	0	0	0%	0%	275	275	0	275	0
66111	Kansas City	KS	0	359	69	0	0	0%	0%	69	69	0	69	0
66105	Kansas City	KS	0	60	16	0	0	0%	0%	16	16	0	16	0
66102	Kansas City	KS	0	932	190	0	0	0%	0%	190	190	0	190	0
66061	Olathe	KS	2	6,520	1,372	1	1	50%	50%	1,372	1,372	0	1,372	1
64130	Kansas City	MO	0	656	104	0	0	0%	0%	104	104	0	104	0
66112	Kansas City	KS	1	768	162	1	0	100%	0%	162	162	0	162	0
64109	Kansas City	MO	0	325	58	0	0	0%	0%	58	58	0	58	0
64102	Kansas City	MO	0	22	5	0	0	0%	0%	5	5	0	5	0
66085	Stilwell	KS	0	1,396	300	0	0	0%	0%	300	300	0	300	0
64108	Kansas City	MO	0	1,179	208	0	0	0%	0%	208	208	0	208	0
66118	Kansas City	KS	0	1	1	0	0	0%	0%	1	1	0	1	0
64030	Grandview	MO	2	1,359	278	2	0	100%	0%	139	278	0	278	0
64147	Kansas City	MO	0	19	4	0	0	0%	0%	4	4	0	4	0



Oak Park Mall 11149 West 95 St. Overland Park, KS 66214

Supply Report 5-15-25 Mile Radii

25 Mile Radii

ZIP	Area Name	ST	Total Facilities	Total Golfers	Avid Golfers	Public Facilities	Private Facilities	% Public	% Private	Avid per Public Course 18 HEQ	Avid per Private Course 18 HEQ	Off-Course Retail Doors (Counts)	Avid per Off-Course Retail Store	Sporting Good Store (Counts)
64101	Kansas City	MO	0	31	10	0	0	0%	0%	10	10	0	10	0
66101	Kansas City	KS	0	345	77	0	0	0%	0%	77	77	0	77	0
64128	Kansas City	MO	0	427	70	0	0	0%	0%	70	70	0	70	0
64105	Kansas City	MO	0	804	140	0	0	0%	0%	140	140	0	140	0
64134	Kansas City	MO	1	840	157	1	0	100%	0%	105	157	0	157	0
64106	Kansas City	MO	0	364	80	0	0	0%	0%	80	80	0	80	0
64138	Kansas City	MO	2	1,709	339	1	1	50%	50%	339	339	0	339	0
66031	New Century	KS	0	31	6	0	0	0%	0%	6	6	0	6	0
64127	Kansas City	MO	0	607	97	0	0	0%	0%	97	97	0	97	0
64129	Kansas City	MO	0	401	73	0	0	0%	0%	73	73	0	73	0
66012	Bonner Springs	KS	2	893	191	1	1	50%	50%	191	382	0	191	0
66104	Kansas City	KS	0	739	150	0	0	0%	0%	150	150	0	150	0
64149	Kansas City	MO	0	55	14	0	0	0%	0%	14	14	0	14	0
66115	Kansas City	KS	0	9	3	0	0	0%	0%	3	3	0	3	0
64124	Kansas City	MO	0	265	45	0	0	0%	0%	45	45	0	45	0
66018	De Soto	KS	2	517	117	2	0	100%	0%	78	117	0	117	0
64012	Belton	MO	3	2,370	498	2	1	67%	33%	199	498	0	498	0
64126	Kansas City	MO	0	190	23	0	0	0%	0%	23	23	0	23	0
64133	Kansas City	MO	1	2,637	506	1	0	100%	0%	506	506	0	506	0
66030	Gardner	KS	1	1,348	296	1	0	100%	0%	296	296	0	296	0
64123	Kansas City	MO	0	287	51	0	0	0%	0%	51	51	0	51	0
66013	Bucyrus	KS	0	245	47	0	0	0%	0%	47	47	0	47	0
64116	Kansas City	MO	0	1,851	358	0	0	0%	0%	358	358	0	358	0
64150	Riverside	MO	0	148	29	0	0	0%	0%	29	29	0	29	0
64081	Lees Summit	MO	1	3,812	765	0	1	0%	100%	765	1,530	0	765	1
64125	Kansas City	MO	0	80	20	0	0	0%	0%	20	20	0	20	0



Oak Park Mall 11149 West 95 St. Overland Park, KS 66214

Supply Report 5-15-25 Mile Radii

25 Mile Radii

ZIP	Area Name	ST	Total Facilities	Total Golfers	Avid Golfers	Public Facilities	Private Facilities	% Public	% Private	Avid per Public Course 18 HEQ	Avid per Private Course 18 HEQ	Off-Course Retail Doors (Counts)	Avid per Off-Course Retail Store	Sporting Good Store (Counts)
66109	Kansas City	KS	1	1,518	319	1	0	100%	0%	319	319	0	319	0
64120	Kansas City	MO	0	153	32	0	0	0%	0%	32	32	0	32	0
64052	Independence	MO	1	1,219	214	1	0	100%	0%	214	214	0	214	0
64139	Kansas City	MO	0	175	38	0	0	0%	0%	38	38	0	38	0
64053	Independence	MO	0	158	32	0	0	0%	0%	32	32	0	32	0
64136	Kansas City	MO	0	75	13	0	0	0%	0%	13	13	0	13	0
66083	Spring Hill	KS	1	570	118	1	0	100%	0%	118	118	0	118	0
66052	Linwood	KS	0	117	25	0	0	0%	0%	25	25	0	25	0
64117	Kansas City	MO	0	640	112	0	0	0%	0%	112	112	0	112	0
64083	Raymore	MO	0	1,600	334	0	0	0%	0%	334	334	0	334	0
66007	Basehor	KS	1	365	97	1	0	100%	0%	97	97	0	97	0
64152	Kansas City	MO	1	3,825	837	0	1	0%	100%	837	419	0	837	0
64055	Independence	MO	1	3,719	662	1	0	100%	0%	441	662	0	662	2
64151	Kansas City	MO	0	3,076	583	0	0	0%	0%	583	583	0	583	0
64054	Independence	MO	0	130	30	0	0	0%	0%	30	30	0	30	0
64082	Lees Summit	MO	1	1,420	331	1	0	100%	0%	331	331	0	331	0
64064	Lees Summit	MO	1	4,113	862	0	1	0%	100%	862	862	0	862	0
64118	Kansas City	MO	0	3,279	648	0	0	0%	0%	648	648	0	648	0
64161	Kansas City	MO	0	25	7	0	0	0%	0%	7	7	0	7	0
64063	Lees Summit	MO	0	2,301	431	0	0	0%	0%	431	431	0	431	0
64050	Independence	MO	0	937	179	0	0	0%	0%	179	179	0	179	0
66025	Eudora	KS	1	405	98	1	0	100%	0%	98	98	0	98	0
66021	Edgerton	KS	0	149	26	0	0	0%	0%	26	26	0	26	0
64119	Kansas City	MO	1	2,823	568	1	0	100%	0%	1,136	568	0	568	0
64057	Independence	MO	0	1,298	233	0	0	0%	0%	233	233	0	233	0
64078	Peculiar	MO	0	502	98	0	0	0%	0%	98	98	0	98	0



Oak Park Mall 11149 West 95 St. Overland Park, KS 66214

Supply Report 5-15-25 Mile Radii

25 Mile Radii

ZIP	Area Name	ST	Total Facilities	Total Golfers	Avid Golfers	Public Facilities	Private Facilities	% Public	% Private	Avid per Public Course 18 HEQ	Avid per Private Course 18 HEQ	Off-Course Retail Doors (Counts)	Avid per Off-Course Retail Store	Sporting Good Store (Counts)
66043	Lansing	KS	1	847	194	0	1	0%	100%	194	194	0	194	0
64015	Blue Springs	MO	1	3,562	674	1	0	100%	0%	1,348	674	0	674	0
66086	Tonganoxie	KS	0	607	123	0	0	0%	0%	123	123	0	123	0
64734	Cleveland	MO	0	106	20	0	0	0%	0%	20	20	0	20	0
64154	Kansas City	MO	1	1,386	365	1	0	100%	0%	365	365	0	365	1
64034	Greenwood	MO	0	813	167	0	0	0%	0%	167	167	0	167	0
64153	Kansas City	MO	0	664	152	0	0	0%	0%	152	152	1	152	1
64158	Kansas City	MO	0	567	113	0	0	0%	0%	113	113	0	113	0
64056	Independence	MO	0	741	156	0	0	0%	0%	156	156	0	156	0
64086	Lees Summit	MO	0	2,659	519	0	0	0%	0%	519	519	0	519	0
64155	Kansas City	MO	1	2,538	569	0	1	0%	100%	569	569	1	569	1
64156	Kansas City	MO	1	212	57	1	0	100%	0%	57	57	0	57	0
25 Mile Radii Totals			60	185,337	38,310	38	22	63%	37%	1,008	1,741	7	5,473	13



Oak Park Mall 11149 West 95 St. Overland Park, KS 66214

Supply Report 5-15-25 Mile Radii

About Longitudes Group LLC.

Longitudes Group, LLC is a research and marketing company providing unique analysis on the travel and spending behaviors of avid golfers in the USA and Canada armed with consumer demand database containing information on the behavior of 7.0 million golfers mapped by county and zip/postal code. Longitudes Group uses a geo-demographic approach to probe both the location and travel behavior of the avid golfer population. Using Geographic Information Systems (GIS), the company can then map golfers population at the zip code and block level and correlate them with a variety of consumption traits. These formulas and methodologies can be applied to local, regional, and nationwide markets.

On the supply side, Longitudes Group has built the most up-to-date database of golf retailers in the USA market including more than 16,130 facilities, 1,230 off-course retail stores, and 1,880 chain sporting good stores.

The power of Longitudes Group data sets and specialized analysis is to replicate the universe of today's supply and demand in the golf marketplace. Manufacturers, resorts, real estate developments, golf courses, tour operators, and associations can overlay their current sales and customers to understand market performance, and organizational strengths and weaknesses. Armed with specific measurable information, Longitudes Group clients have been able to more efficiently and effectively target market retail customers and consumers, and make better decisions that impact the bottom line.

Longitudes Client List Includes:

- Acushnet Golf
- Bridgestone Golf
- Business Week
- Callaway Golf
- Cleveland/Srixon
- Executive Women's Golf Association
- Golf Digest Magazine Group
- Golf Etc.
- Golf Galaxy
- Golf USA
- Haversham & Baker Golf Expeditions
- Fujikura Shafts
- Mizuno
- Myrtle Beach Golf Holiday
- Nevada Bob's
- Nike Golf
- Palmetto Dunes Resort
- Precor USA
- Reed Exhibitions
- Shoshone-Bannock Tribe & Casino
- Terrace Hills Golf Course
- The Golfer's Warehouse
- Trump National - Bedminster, NJ
- Trump National - Westchester, NY

Contact Info:

Sara Killeen, President
Email: sara@longitudesgroup.com
Phone: 402.991.6620

Eric Hardy, Director of Research
eric@longitudesgroup.com
719.477.1715

